



**SRM-IC**



## **VISION**

To create a vibrant community of innovators and collaborators, where diverse talents come together to push the boundaries of possibility, create value, and inspire positive change in the world.

## **MISSION**

At Strategic Research & Management Innovation Centre (SRM-IC), our mission is to cultivate the next generation of engineering leaders by providing a dynamic learning environment that nurtures creativity, fosters innovation, and imparts a passion for lifelong learning. We are committed to:

M1: Guiding and supporting aspiring entrepreneurship students in translating their ideas into successful ventures, thereby contributing to economic development and societal well-being.

M2: Facilitate interdisciplinary collaboration and knowledge exchange, bridging the gap between academia, industry, and society.



## OBJECTIVES

The objectives are set to encompass the core areas of focus for the Incubation Centre, spanning strategic goals, operational activities, and metrics for evaluating performance and engagement.

### **Obj:1 Strategic Method**

- Nurture Innovation
- Promote Entrepreneurship
- Facilitate Industry Collaboration

### **Obj: 2 Operational Approach**

- Support Research and Development
- Promote Culture of Inclusivity and Diversity
- Encourage Ethical Leadership and Social Responsibility

### **Obj: 3 Measurement Factors**

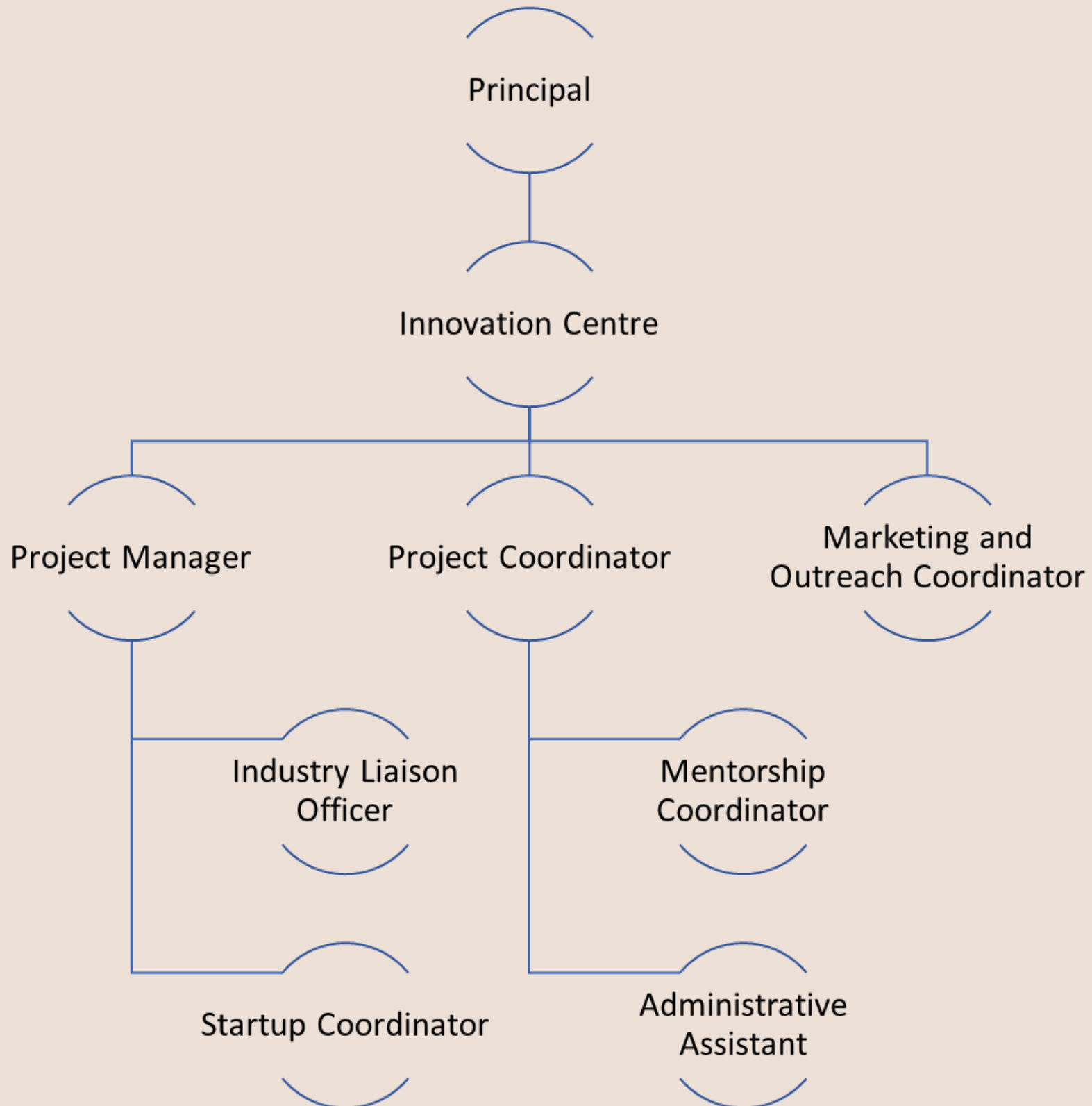
- Measure Impact and Success
- Build a Vibrant Community

## EXPECTED OUTCOMES

- Innovative ideas and prototypes from students.
- Expanded network of industry partners, mentors, and investors.
- Active participation from students, faculty, alumni, and partners in Incubation Center activities.
- Increased diversity and inclusivity in entrepreneurship and innovation.
- Successful startups with sustainable business models.



## ORGANIZATIONAL CHART





## STUDENTS PROJECT INFO

### Design Patent Titles

- Design of an AI-Driven Automated Packaging and Sorting Robot
- Design of an AI-Driven Adaptive Robotic Manipulator
- Design of an AI-Enhanced Cybersecurity Monitoring Tool
- Design of an IoT-Based Wearable Health Monitor
- Design of an IoT Smart Appliance Control Interface

### Innovation Centre In-Charge

Dr. K. Balamurugan

Associate Professor,

Department of Mechanical Engineering

E-Mail: [balamurugan@srmccet.edu.in](mailto:balamurugan@srmccet.edu.in)

Mobile: +917659932385